

# MONTHLY MEMBERSHIP PROGRESS REPORT

District 24 C

Results as of: 5/31/2024

GMT:

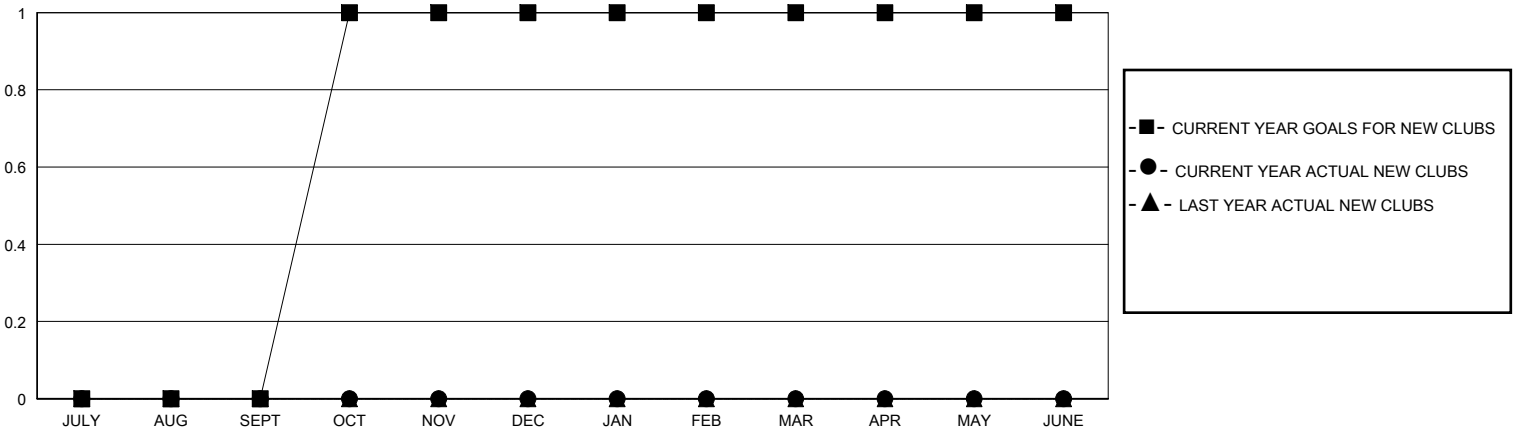
LOCATION VIRGINIA

GMT CA

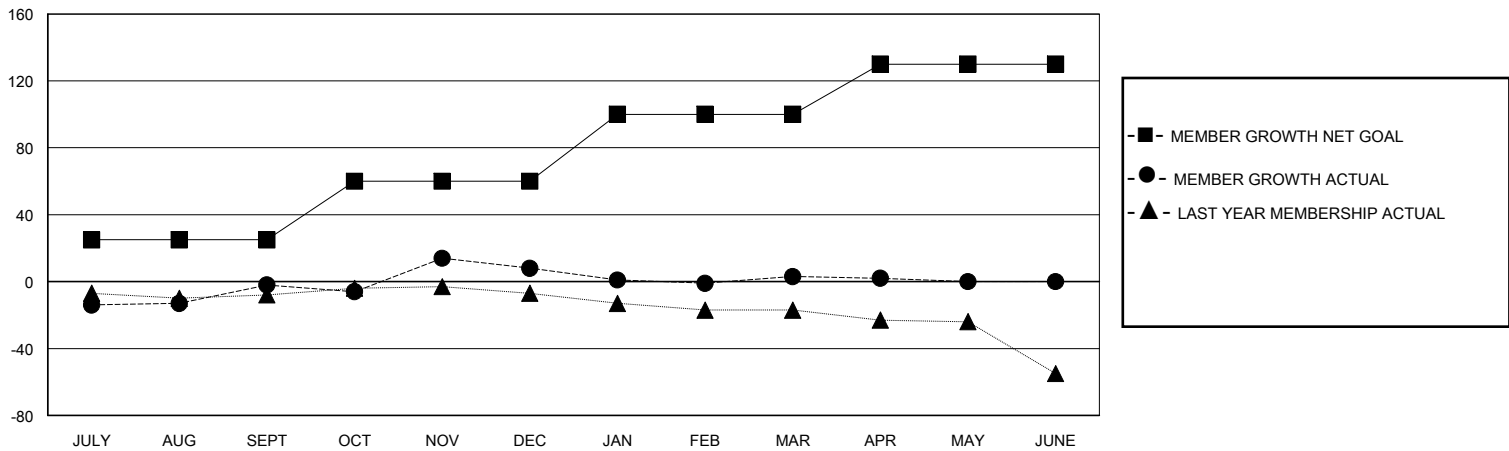
Clubs			
RESULTS FOR 2023-2024			
QUARTER	NEW CLUB GOAL	NEW CLUBS	DROPPED CLUBS
JULY/AUG/SEPT	0	0	0
OCT/NOV/DEC	1	0	0
JAN/FEB/MAR	0	0	0
APR/MAY/JUNE	0	0	0

Members			
RESULTS FOR 2023-2024			
QUARTER	MEMBER GROWTH NET GOAL	MEMBER GROWTH ACTUAL	DROPPED MEMBERS ACTUAL (including transfers)
JULY/AUG/SEPT	25	36	34
OCT/NOV/DEC	35	52	39
JAN/FEB/MAR	40	37	34
APR/MAY/JUNE	30	16	17

GOALS AND ACTUAL NEW CLUBS CUMULATIVE



GOALS AND ACTUAL MEMBERS CUMULATIVE



DROPPED CLUBS: 0	32 CLUBS OF 51 ADDED 1 OR MORE NEW MEMBERS	<b>GENDER DISTRIBUTION</b> MALE 799 (63.72%) FEMALE 455 (36.28%)
<b>DROPPED MEMBERS</b> DECEASED 26 CLUB CANCELLED 0 OTHER 98 TOTAL 124	<a href="#">CLICK HERE FOR CUMULATIVE MEMBERSHIP DATA</a>	TOTAL FAMILY UNIT MEMBERS 211 FAMILY MEMBERS PAYING HALF DUES 106